

intellistream®

BUSINESS INTELLIGENCE,
PERFORMANCE
MANAGEMENT & ANALYTICS
AS A SERVICE



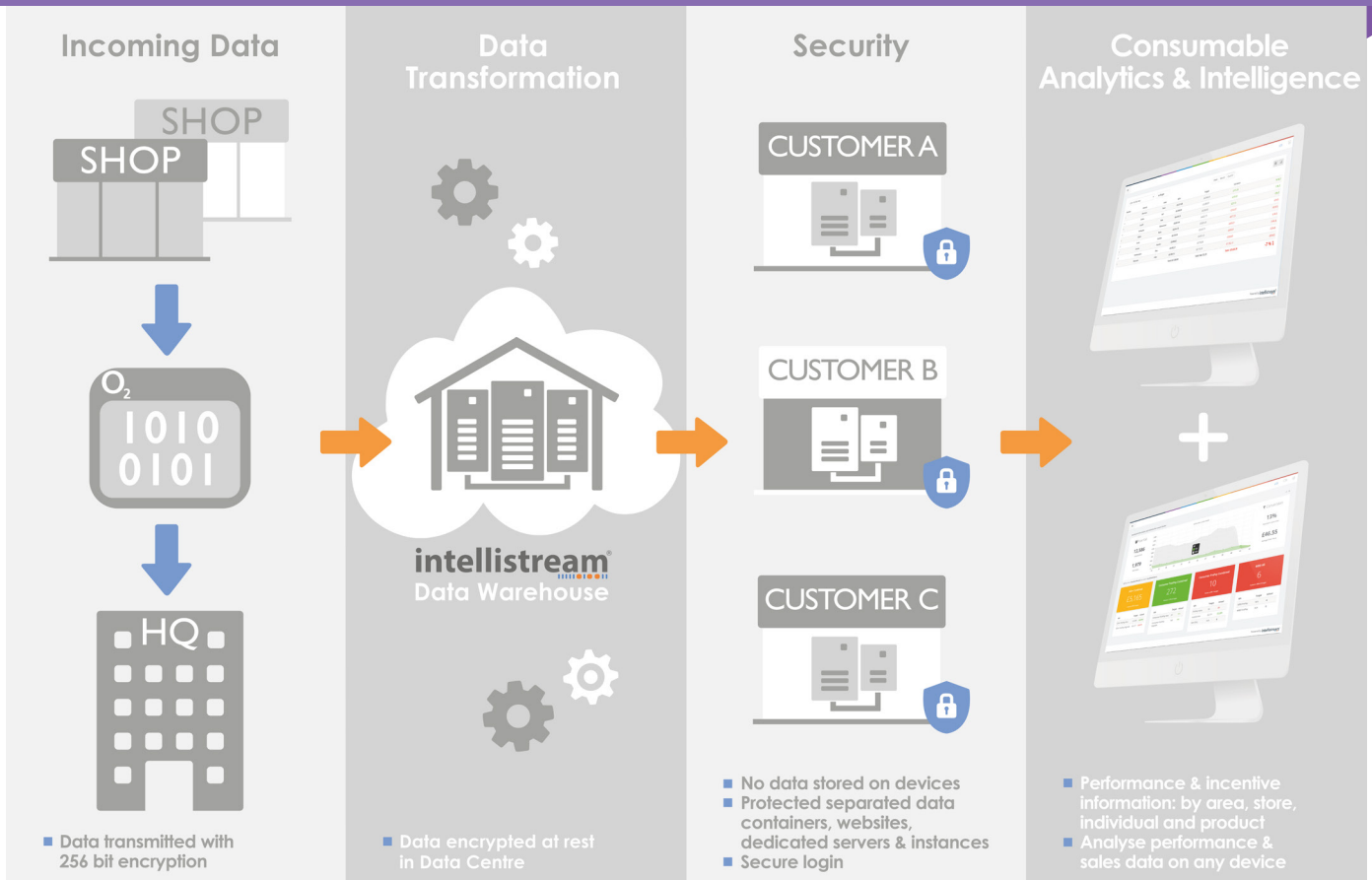


INTELLISTREAM®

Intellistream is a versatile sales data analysis and business intelligence tool for sales team leaders and business managers. It adds value to data analysis and stimulates revenue growth.

The platform provides managers with an instant, powerful and configurable toolset providing a single version of the truth. This allows users to quickly drill into data, gain and share business insight and develop effective business strategies.

THE INTELLISTREAM PROCESS



COMMON CHALLENGES

Organisations need accurate and relevant business data, which is instantly accessible and insightful. Achieving this can require costly resources and it may be challenging to maximise opportunities, increase revenue and market share.

So Intellistream was designed to:

- Reduce resource intensive tasks i.e. processing and extracting data from disparate internal systems.
- Improve system integration, automation and collection of data into your warehouse - providing instant access to centralised data as required.
- Speed up data analysis... Spend less time on producing and manipulating data, and more on gaining business insight.
- Create a powerful toolset enabling:
 - Improved sales revenues
 - Reduction of costs
 - Improved service levels
 - Improved business insight
 - Performance management

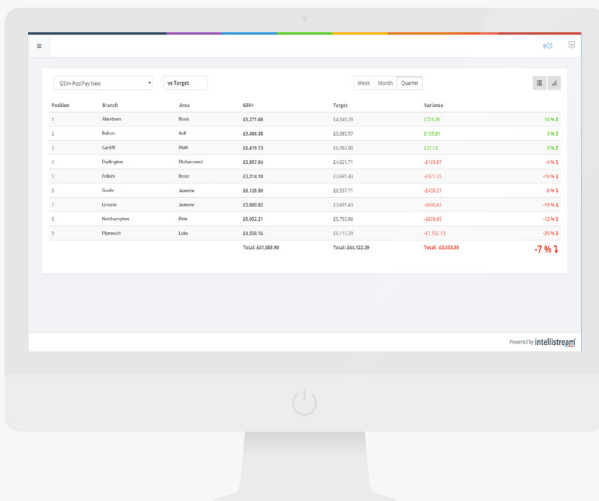




FEATURES AND BENEFITS

PERFORMANCE ANALYTICS

- **Manual processing of transactional data and file upload:** Reduce manual tasks by automating data handling and file reprocessing.
- **Instant access to data:** Avoid delays in receiving operational reports and gathering performance insight.
- **Access KPI's and key reports anytime, anywhere:** Automatically provide key personnel with the reports they need anytime, anywhere - securely via web access using any device.
- **Back office leaderboard:** Instantly view management KPI's on large screens - by salesperson, store, branch or product - to improve performance, training and revenue growth.
- **Stock transactional analysis:** Monitor and trace stock movement for efficient procurement and help reduce stock shrinkage.
- **CRM integration:** Integrate with CRM packages and contact centres for more effective marketing of contract renewals and upgrades.
- **KPI constructor:** Build your own reports and set performance targets easily with instant results.

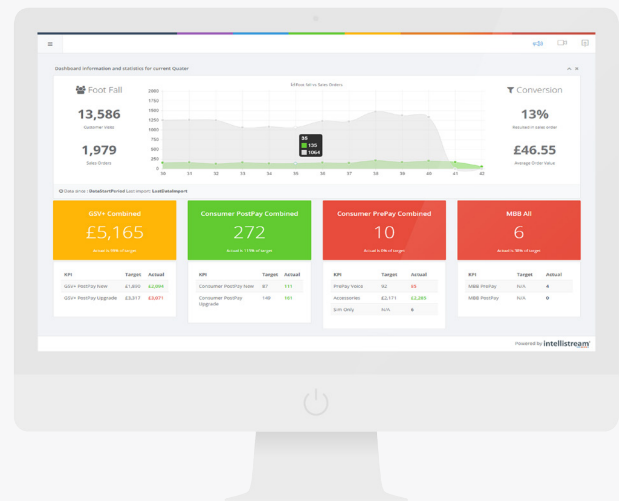


OVERALL BENEFITS

- Efficiency through automated business performance management.
- Peace of mind knowing your data is secure, in one centralised location.
- Effective tools to reduce costs and increase turnover.

BUSINESS INTELLIGENCE

- **Managed data warehouse:** Securely encrypted data, which is instantly accessible, cost effective and scalable.
- **Normalised database:** A centralised, single view of the facts - for making more relevant, better business decisions, faster.
- **Dashboard presentation:** Clear, informative and attractive dashboard views, with drill down detail and customisation.
- **Bespoke reporting:** A set of pre-configured reports bespoke to your business needs, with open access for customisation and support packages.
- **Data integration:** Consultancy services for a comprehensive view and connection of previously disparate internal and external systems into Intellistream.
- **Intellistream® Connector:** Enables internal business analysts to securely connect external reporting tools such as Power Pivot and BI to Intellistream.



OVERALL BENEFITS

- Empowered insights and intelligence to improve strategic decisions.
- Presentation of overall business performance and drill down capabilities highlighting trends and weaknesses.
- Business intelligence to improve efficiency, reduce costs and increase turnover.

Call the Business Development team on: 01282 507281

WANT TO KNOW MORE?



Serium Limited
Unit 5 Dominion Court
Billington Road
Burnley
Lancashire
BB11 5UB



01282 507281



sales@seriun.co.uk



www.seriun.co.uk

